

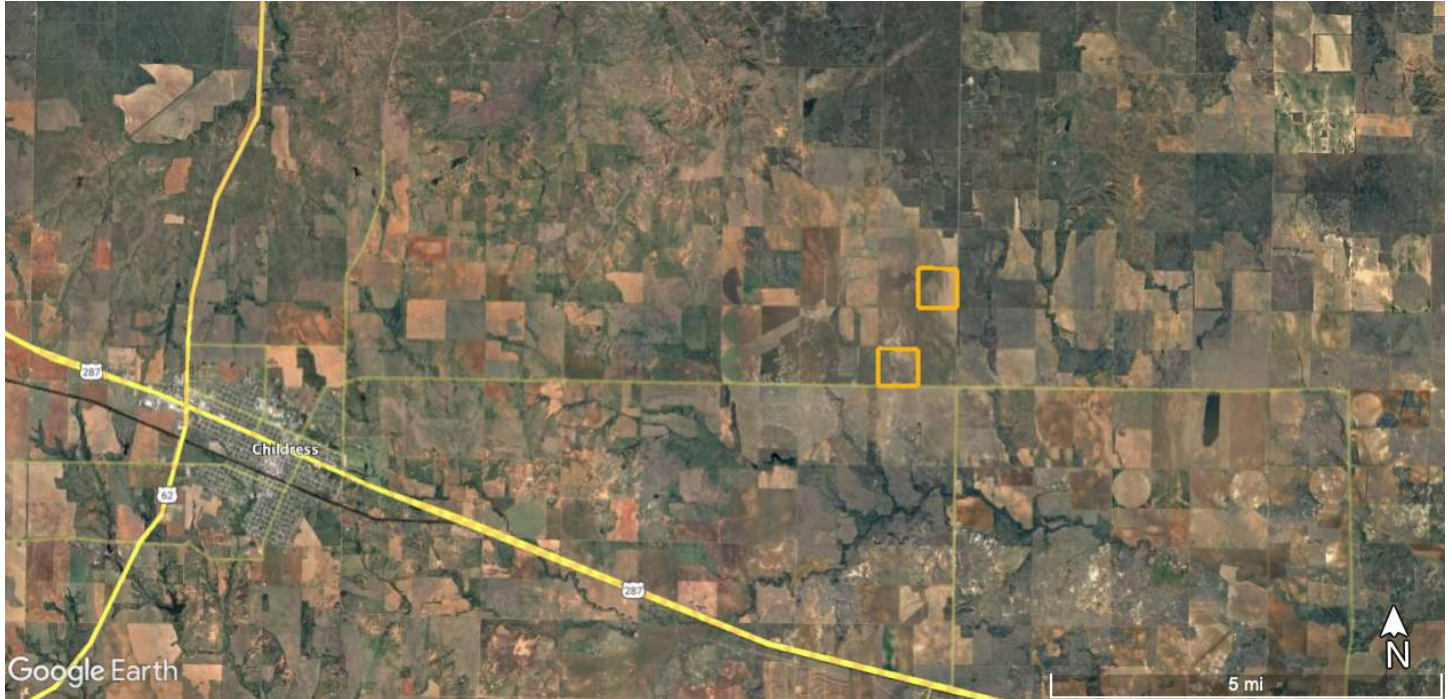


Marty Nicholson, Agent PH:  
806-330-0057  
6107 S Coulter STE #300  
AMARILLO, TEXAS 79119

# FOR SALE

Childress Co 312 Acres

**\$468,000**  
**\$1,500/acre**



**3D interactive Map**





## Childress Co Grass 312

<b>County:</b>	Childress County, East of Childress, TX.
<b>Location:</b>	From Childress head East on FM 268 for 7.3 miles. SW ¼ section sits at the intersection of Co Rd 21. From FM 268 head 2 miles East and turn left on FM 1033. The NE ¼ section sits at the intersection of FM 268 and Co Rd V.
<b>Access:</b>	Highway access. The south property is accessed by FM 268. The north Property is accessed by FM 1033.
<b>Total Acres:</b>	312
<b>NE ¼ Section:</b>	152 acres
<b>SW ¼ Section:</b>	160 acres
<b>Land Type:</b>	Dryland
<b>Improvements:</b>	Some barbed wire fence, municipal water runs through the SW ¼ section.