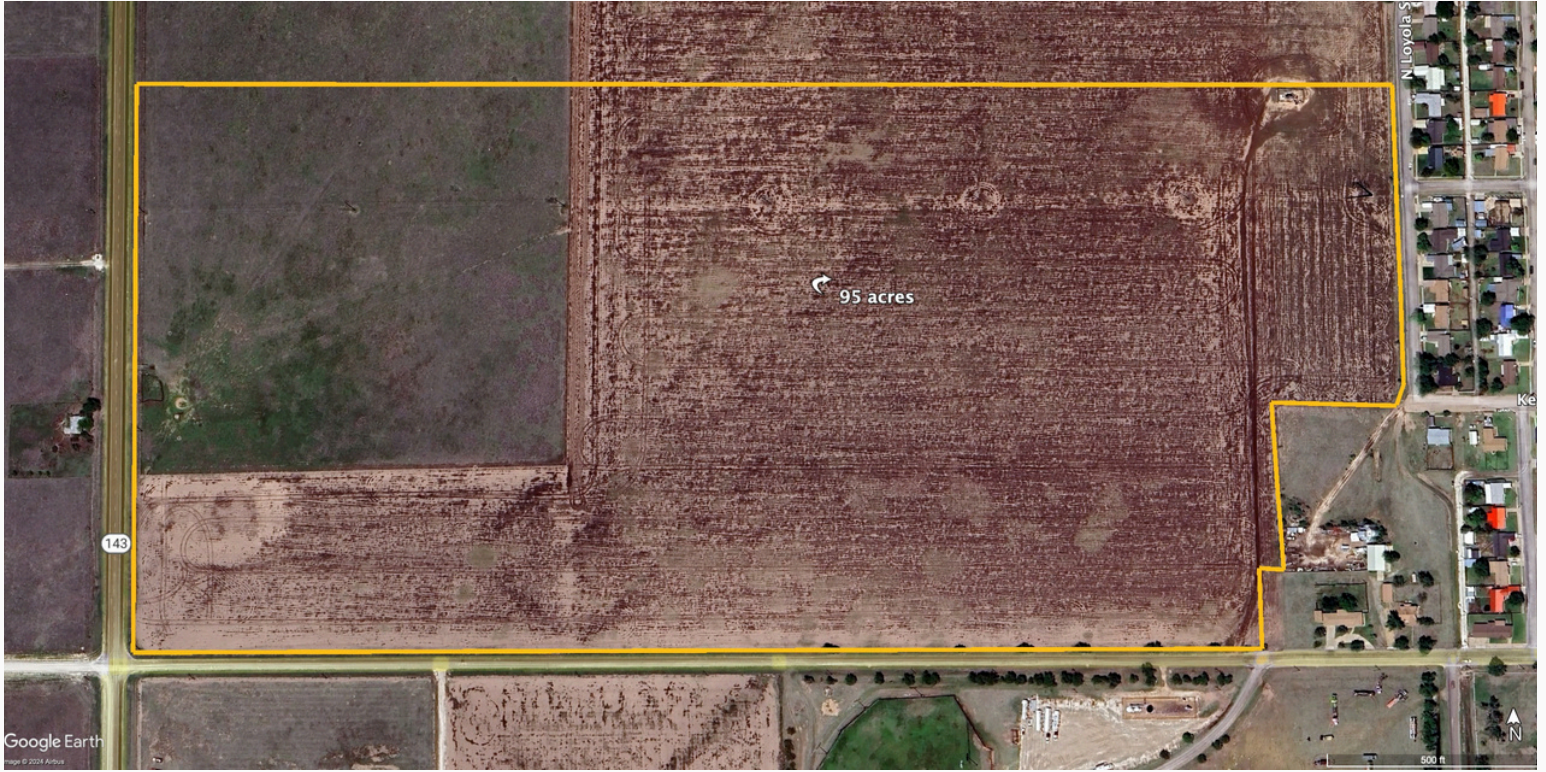


FOR SALE

PERRYTON DEVELOPMENT LAND- SOUTH PORTION

**\$286,201 OR
\$2,900/ACRE**



PERRYTON DEVELOPMENT LAND- SOUTH PORTION

PROPERTY OVERVIEW

Perryton Development Land- South Portion 98.69 Acres

AREA: NW of Perryton, TX in Ochiltree County

LOCATION: The property sits on the west side of Perryton at the intersection of Highway 143 and SW 3rd Ave. The east boundary runs along the city limits of Perryton, TX.

ACCESS: Highway 143 runs along the west boundary and SW 3rd St runs along the south boundary.

TOTAL ACRES: 98.69 Acres

TOPOGRAPHY AND LANDSCAPE: The majority of the land is tilled, flat ground. A small portion of grass is on the west side.

WATER: City water is up against the east side of the property. One well is currently on the property equipped with an electric submersible pump.

RESOURCES: The land is offered with all wind and water rights.

DEVELOPMENT LAND: With the close proximity to Perryton. This parcel can be developed into commercial and/or residential lots.

PERRYTON DEVELOPMENT LAND- SOUTH PORTION



PERRYTON DEVELOPMENT LAND- SOUTH PORTION

