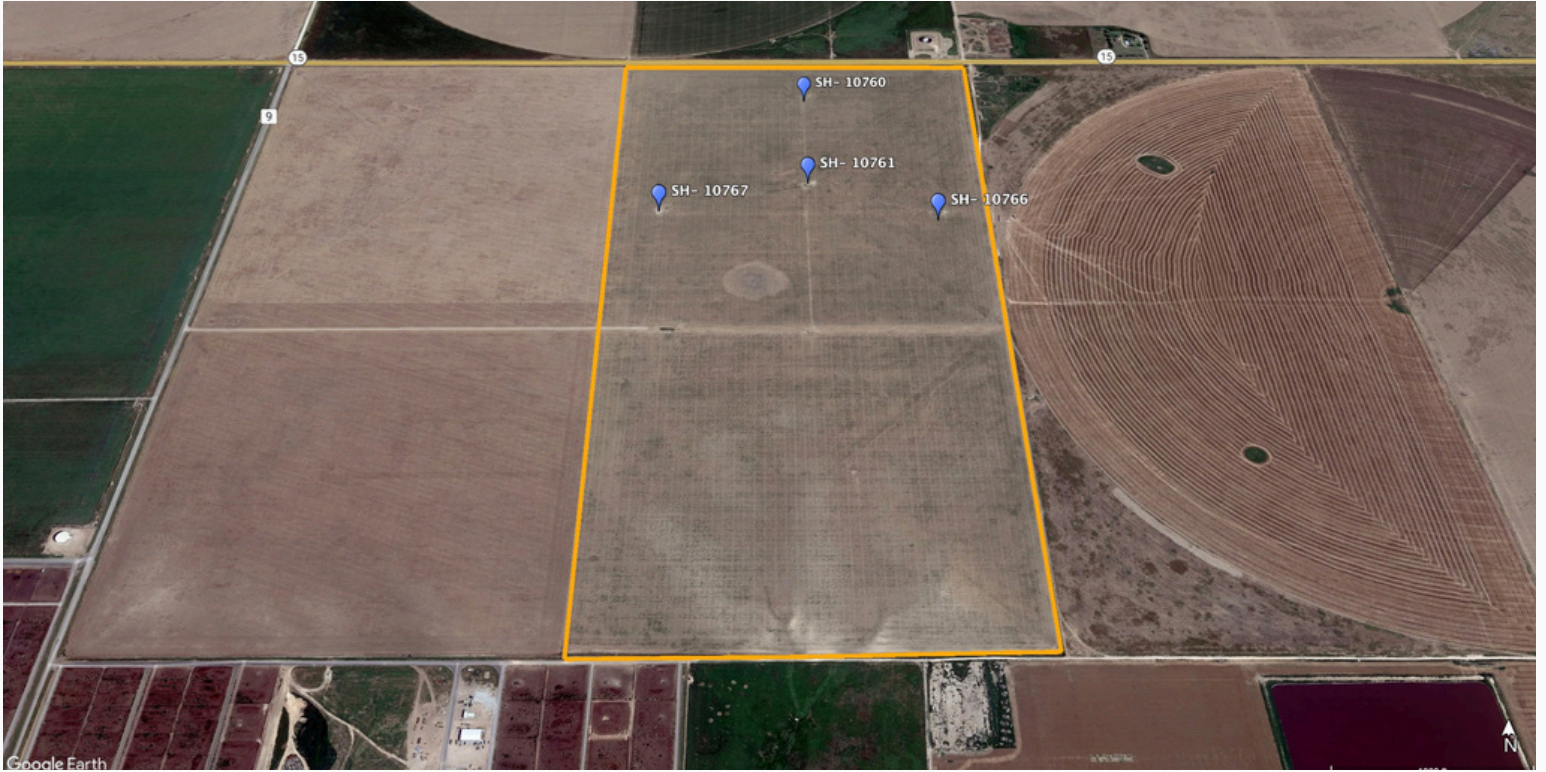


**UNDER CONTRACT**  
**HIGHWAY 15 DRIP IRRIGATION 320**





## HIGHWAY 15 DRIP IRRIGATION 320

### PROPERTY OVERVIEW

## Highway 15 Drip Irrigation 320 Acres

**AREA:** Due east of Stratford, TX in Sherman Co.

**LOCATION:** From Stratford, TX, drive east on State Hwy 152 for 2.5 miles to the NW corner of the property. Property on the south side of the highway.

**TOTAL ACRES:** Approximately 320 Acres

**TOTAL WET ACRES:** Approximately 310 Acres

**% IRRIGATED TO TOTAL ACRES:** 96.87%

**TOTAL IRRIGATION WELLS:** 4 Irrigation Wells

**TOTAL GPM:** Approximately 650 Total GPM

**POWER:** 3-phase electricity runs along the north boundary.

**GPM/WET ACRE:** 2.096 GPM/Wet Acre

### **IMPROVEMENTS:**

310 Acres of Drip Irrigation Tape

4- Irrigation Wells

4- Submersible Pumps

**DRIP IRRIGATION TAPE:** Installed in Year 2019

Tape Depth is 14- 16" Deep

Tape Spacing is 40"



# HIGHWAY 15 DRIP IRRIGATION 320





# HIGHWAY 15 DRIP IRRIGATION 320

