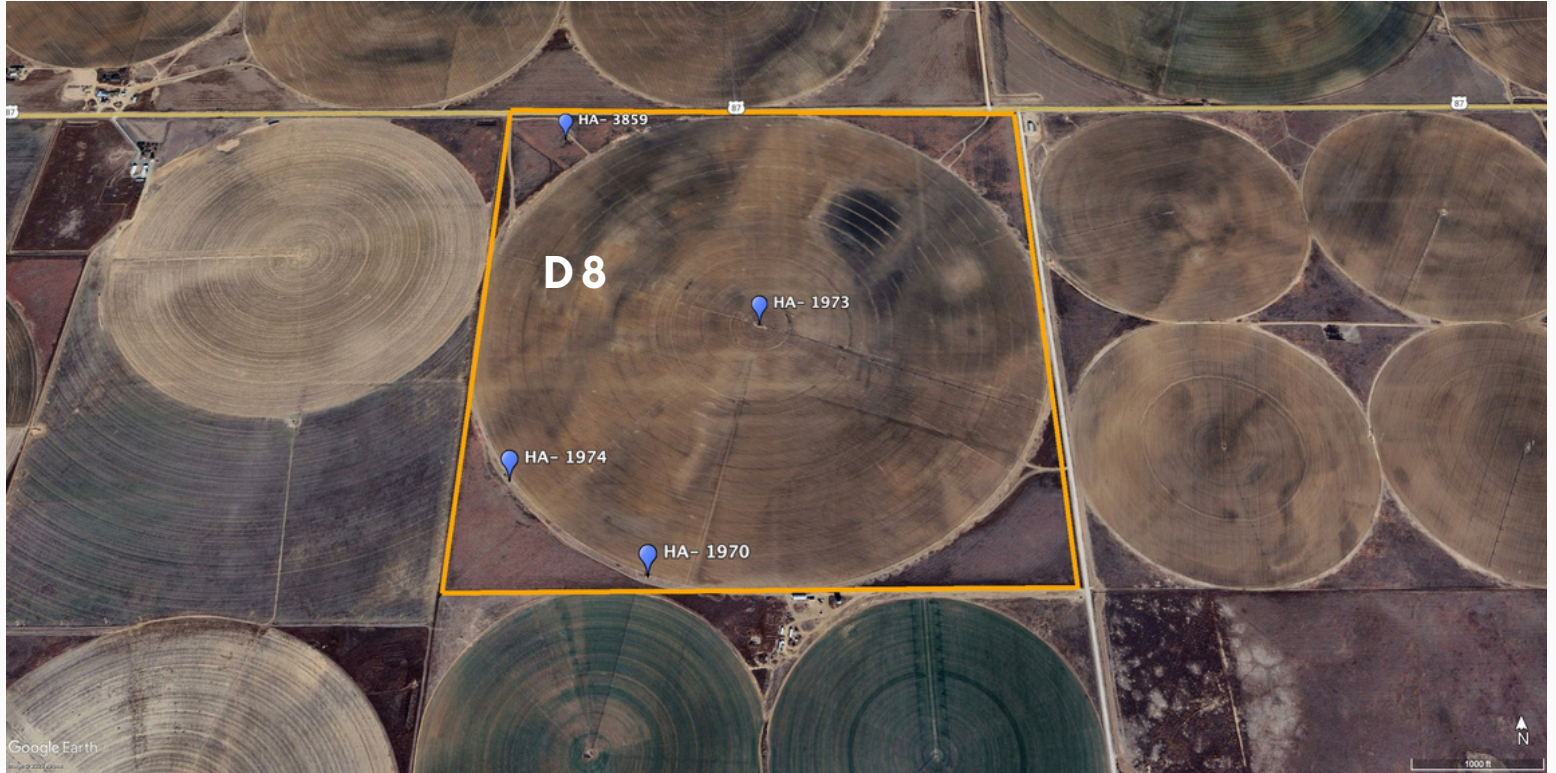
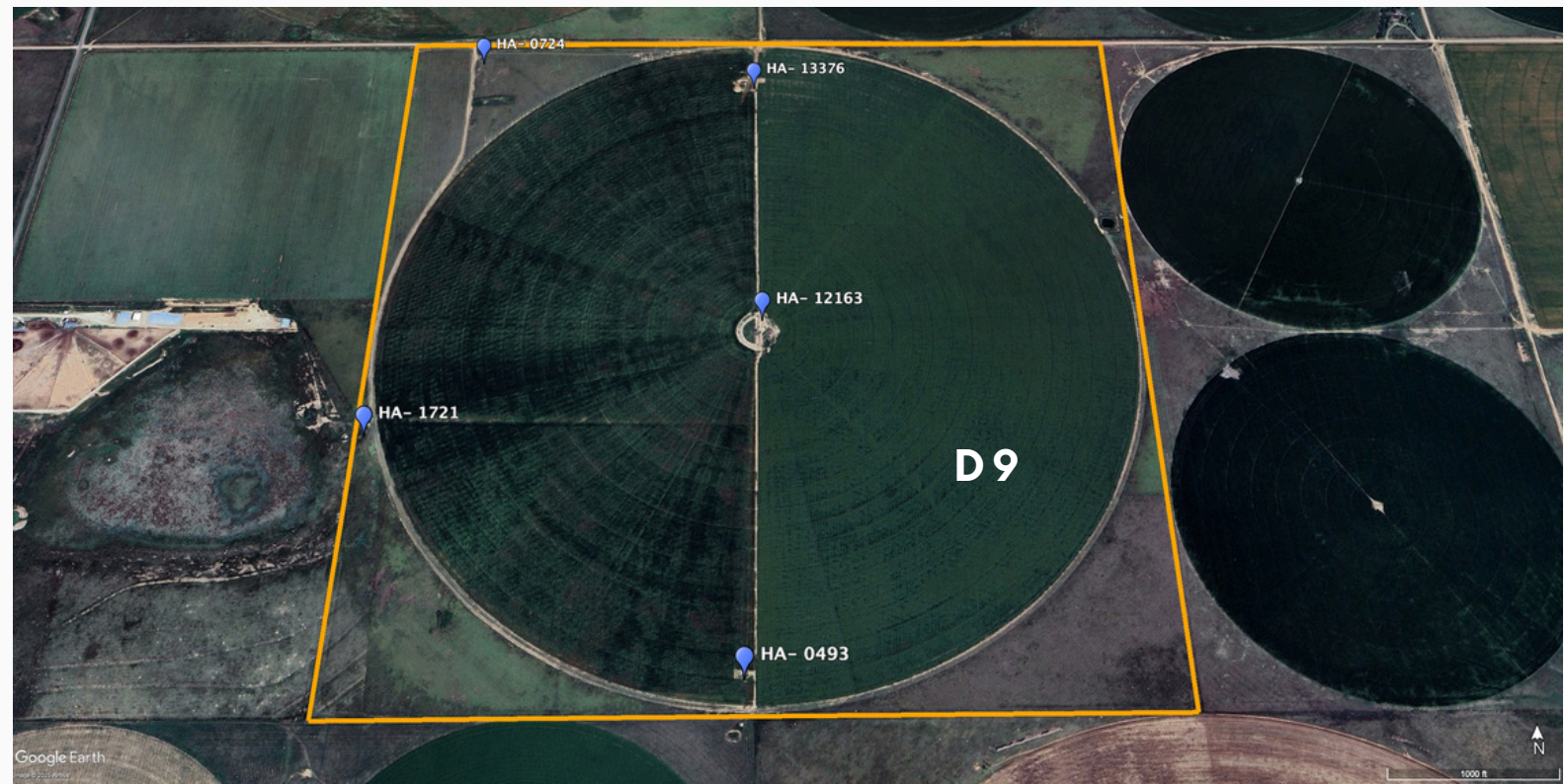
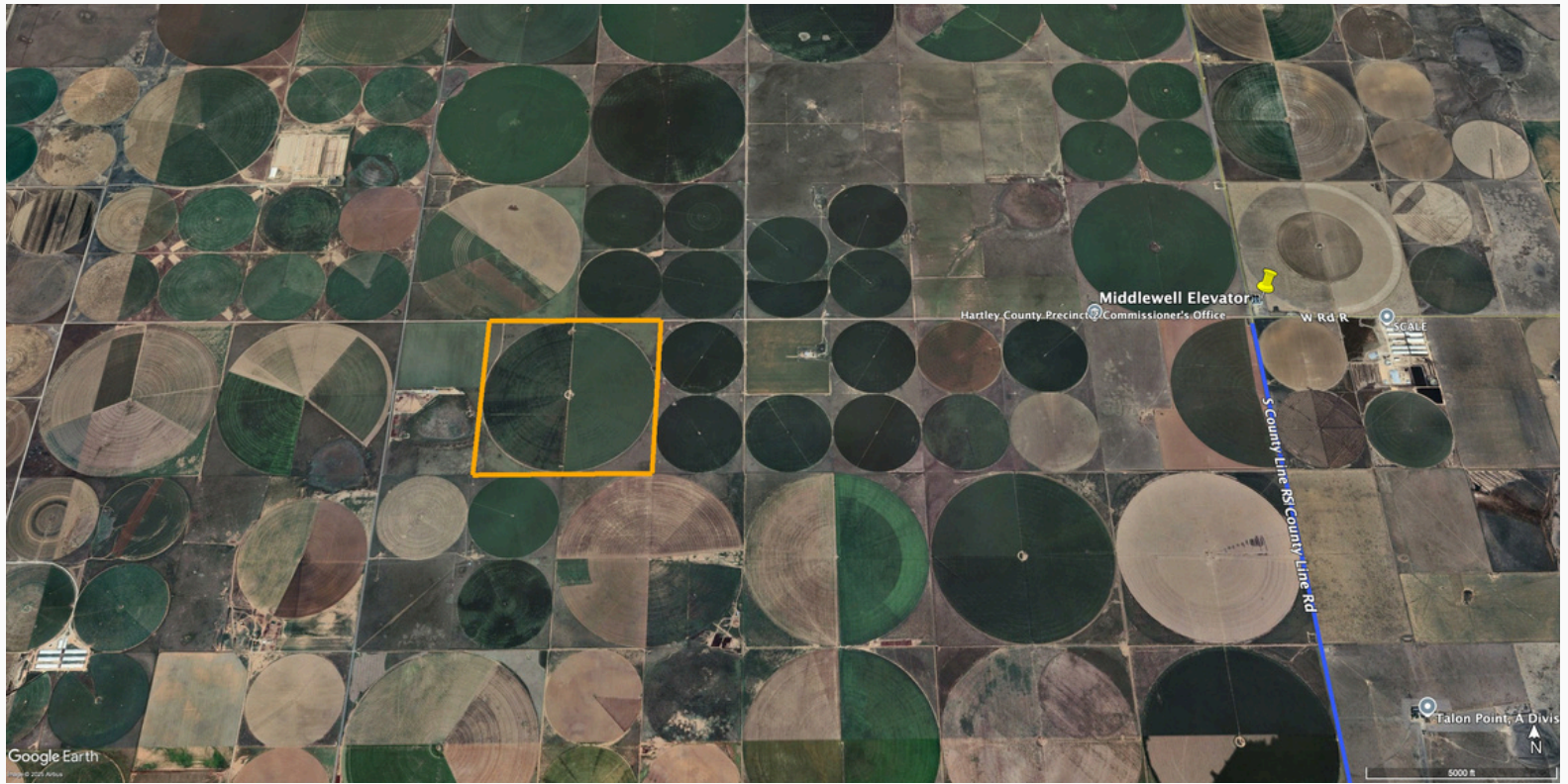


FOR SALE HARTLEY CO.
IRRIGATED FARMS 1,274

\$6,400,000 OR
\$5,000/ACRE



FOR SALE HARTLEY CO.
IRRIGATED FARMS 1,274



HARTLEY CO. IRRIGATED FARMS 1,274



HARTLEY CO. IRRIGATED FARMS 1,274

PROPERTY OVERVIEW

Hartley Co. Irrigated Farms 1,274 Acres

AREA: East of Hartley, TX in Hartley County

LOCATION:

Circle D8 From Hartley, TX drive east 4.5 miles on HWY 87 to the NW corner of the property.

Circle D9 From Hartley, TX drive east 13 miles on HWY 87 to South Co. Line Rd. Turn right and drive south 4 miles to Co. Rd R, turn right and drive west 3 miles to the NE corner of the property.

TOTAL ACRES: Approximately 1,274 Acres

TOTAL WET ACRES: Approximately 960 Acres

WET ACRES TO TOTAL ACRES: 75.3%

TOTAL IRRIGATION WELLS: 9 Wells

TOTAL SPRINKLERS: 2 - zimmatic half mile Sprinklers

TOTAL GPM: Estimated 3,025 GPM

GPM/WET ACRE: 3.15 GPM

HARTLEY CO. IRRIGATED FARMS 1,274

PROPERTY OVERVIEW

Hartley Co. Irrigated Farms 1,274 Acres D8

TOTAL ACRES: 633.94 Acres +/-

WET ACRES: 480 Acres +/-

% WET ACRES TO TOTAL ACRES: 75.7 %

TOTAL WELLS: 4 Wells

TOTAL GPM: 1,400 GPM +/-

GPM/WET ACRE: 2.916

D9

TOTAL ACRES: 639.95 Acres +/-

WET ACRES: 480 Acres +/-

% WET ACRES TO TOTAL ACRES: 75.0 %

TOTAL WELLS: 5 Wells

TOTAL GPM: 1,625 GPM +/-

GPM/WET ACRE: 3.385

HARTLEY CO. IRRIGATED FARMS 1,274

PROPERTY OVERVIEW Hartley Co. Irrigated Farms 1,274 Acres

<u>SPRINKLER D8</u>	<u>YEAR DRILLED</u>	<u>WELL DEPTH</u>	<u>ESTIMATED GPM</u>
HA- 3859	01/26/2011	659'	350 GPM
HA- 1973	Information Unavailable		350 GPM
HA- 1974	Information Unavailable		350 GPM
HA- 1970	Information Unavailable		350 GPM

<u>SPRINKLER D9</u>	<u>YEAR DRILLED</u>	<u>WELL DEPTH</u>	<u>ESTIMATED GPM</u>
HA- 0274	09/03/1963	620'	325 GPM +/-
HA- 13376	06/27/2023	Information Unavailable	325 GPM +/-
HA- 12163	04/03/2021	665'	325 GPM +/-
HA- 1721	05/10/1998	620'	325 GPM +/-
HA- 0493	03/07/1965	655'	325 GPM +/-

HARTLEY CO. IRRIGATED FARMS 1,274

